

U132 MAC Driver USER GUIDE

Document Scope:

The document helps the user to understand the steps required to bring the device to a functional state.

U132 Driver version: 1.1.0

Mac OS Support:

This is a universal driver. It supports:

1. PowerPC using Mac OS X 10.2.8 or new versions.
2. Intel Macintosh using Mac OS X 10.4.0 or new versions.

Features:

- It supports Option GT Fusion (with wi-fi) card.
- It supports Option Vodafone 3G GPRS card.
- It supports Intel/IBM Macintosh.
- Power management not fully implemented, the driver has to be revised for power management. Currently removing the USB cable from U132 and plugging it back solves problems over sleep and wake.

Hardware used in the Examples shown below:

1. U132 Device.
2. Vodafone 3G GPRS Card(manufactured by OPTION wireless technology).
3. USB cables.

ISP Used in the case study:

1. Vodafone ISP.

Installation Steps:

To use U132 with 3G Card, following steps would be required:

1. [Plug the Hardware](#)
2. [Install the U132 Driver](#)
3. [Install the 3G card specific driver](#)
4. [Connecting to the internet](#)

Plug the hardware:

Plug U132 into any of the available USB port. System profile can be used to see the connected USB devices.

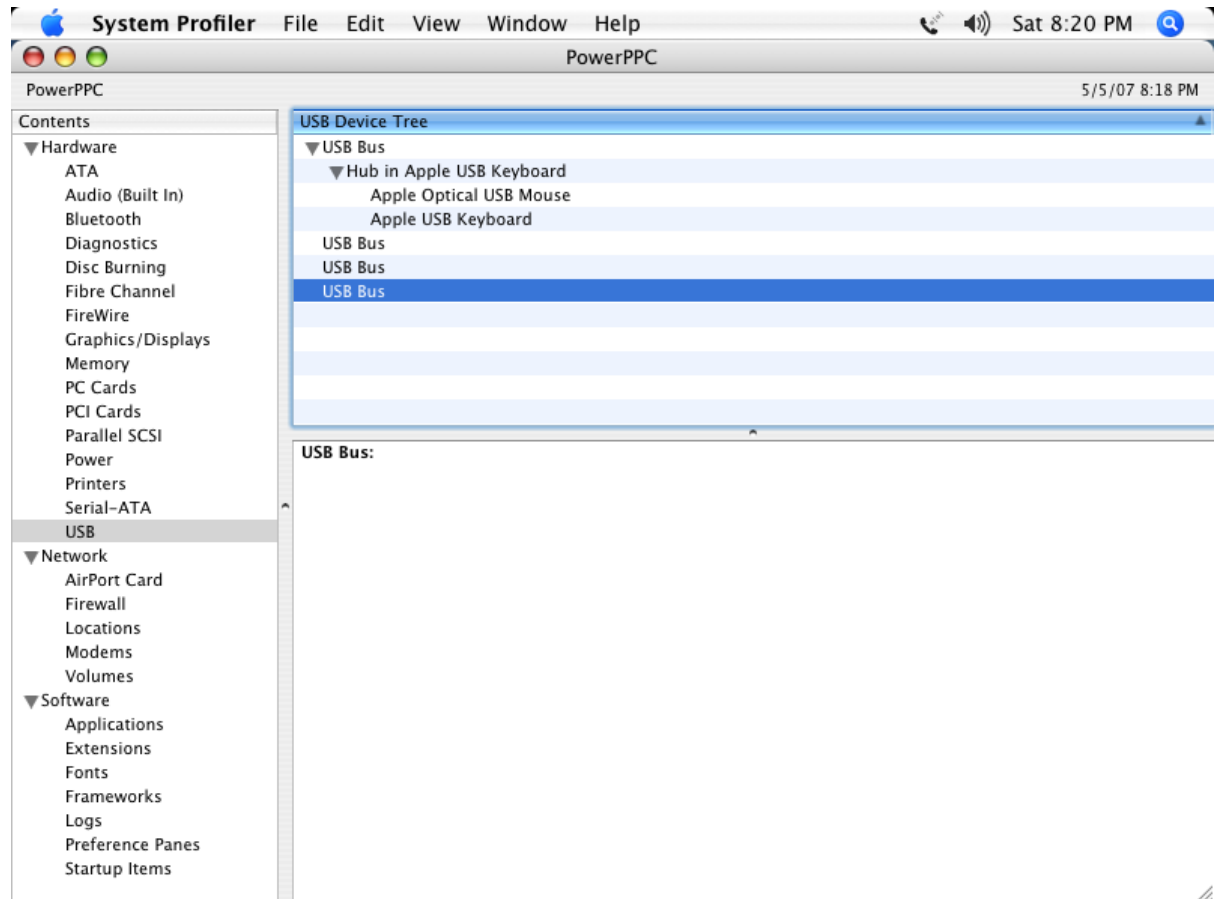


Fig 1.0 System Profiler – U132 not connected.

When U132 is connected but driver is not yet loaded, the system profiler will look something like below.

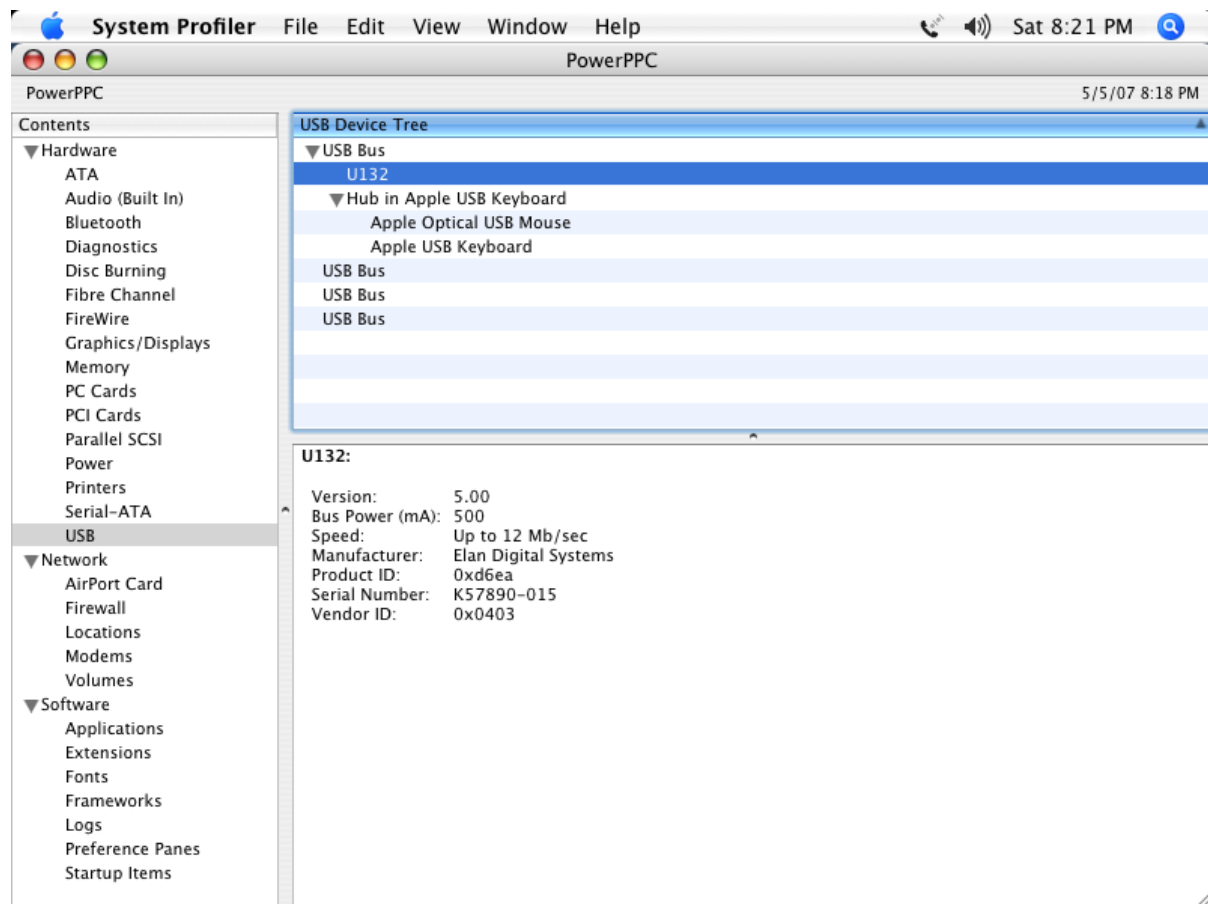


Fig 2.0 System Profiler – U132 connected but driver not loaded.

Install the U132 driver:

1. Install the U132 driver by double clicking on Installable Driver Package.
2. Once the installation finishes the package will ask to restart the computer.
3. Driver will get automatically loaded when the device is plugged.

The driver functionality can be verified by the either of the following observations.

The bi color led on the U132 unit will initially flicker and sometimes will turn green/red initially and then will toggle red on and off. Based on this observation, we can conclude that the U132 Driver is successfully loaded.

OR

By using system profiler we will be able to understand whether driver is loaded or not. The picture below shows the same.

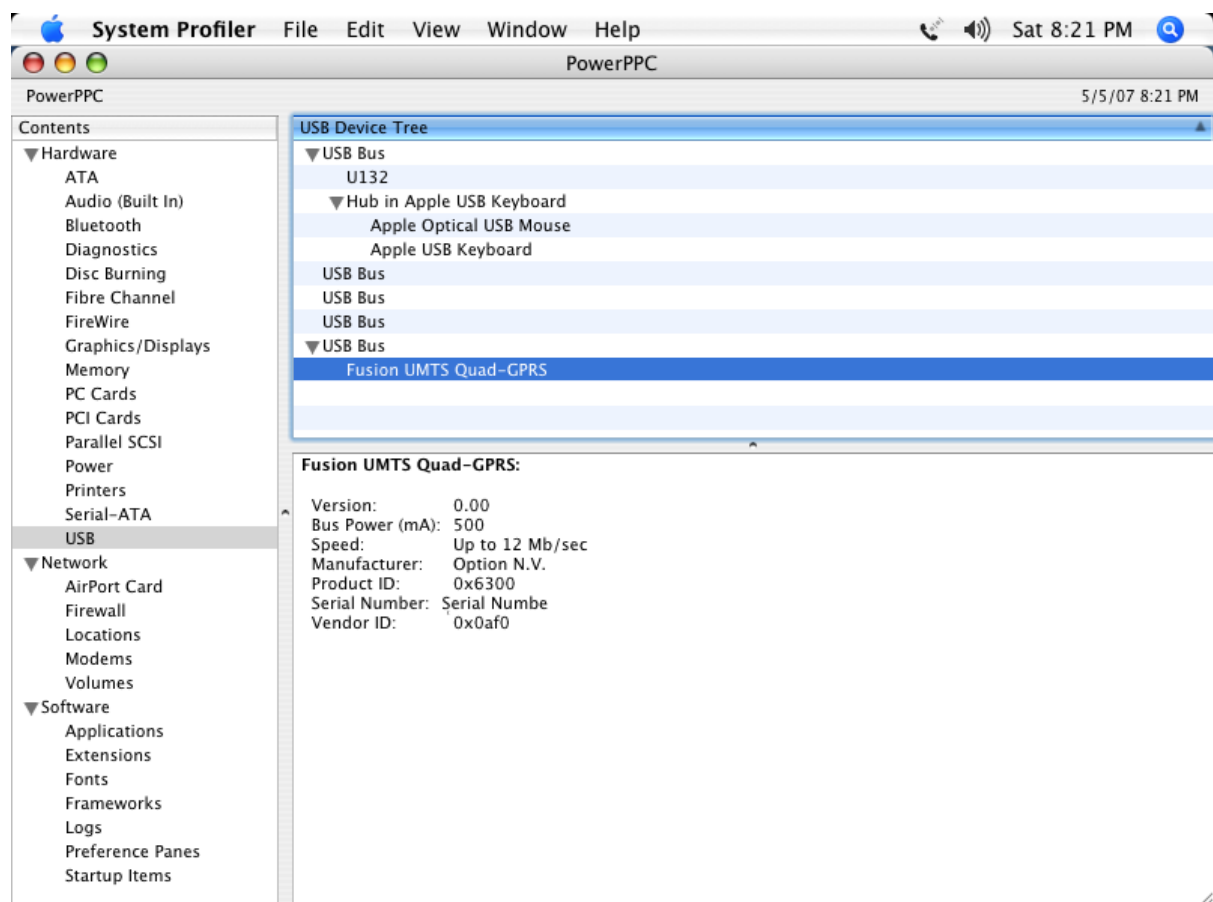


Fig 3.0 System Profiler – U132 driver loaded and U132 connected along with the card.

Install the 3G card specific driver:

Use the 3G card software (driver + application) that came along with the 3G card. You can also download the software from the manufacturer's site, Vodafone in this case, www.vodafone.co.uk.

Before installing 3G card driver, network properties may look something like shown below (these are system specific observations will vary from PC to PC).

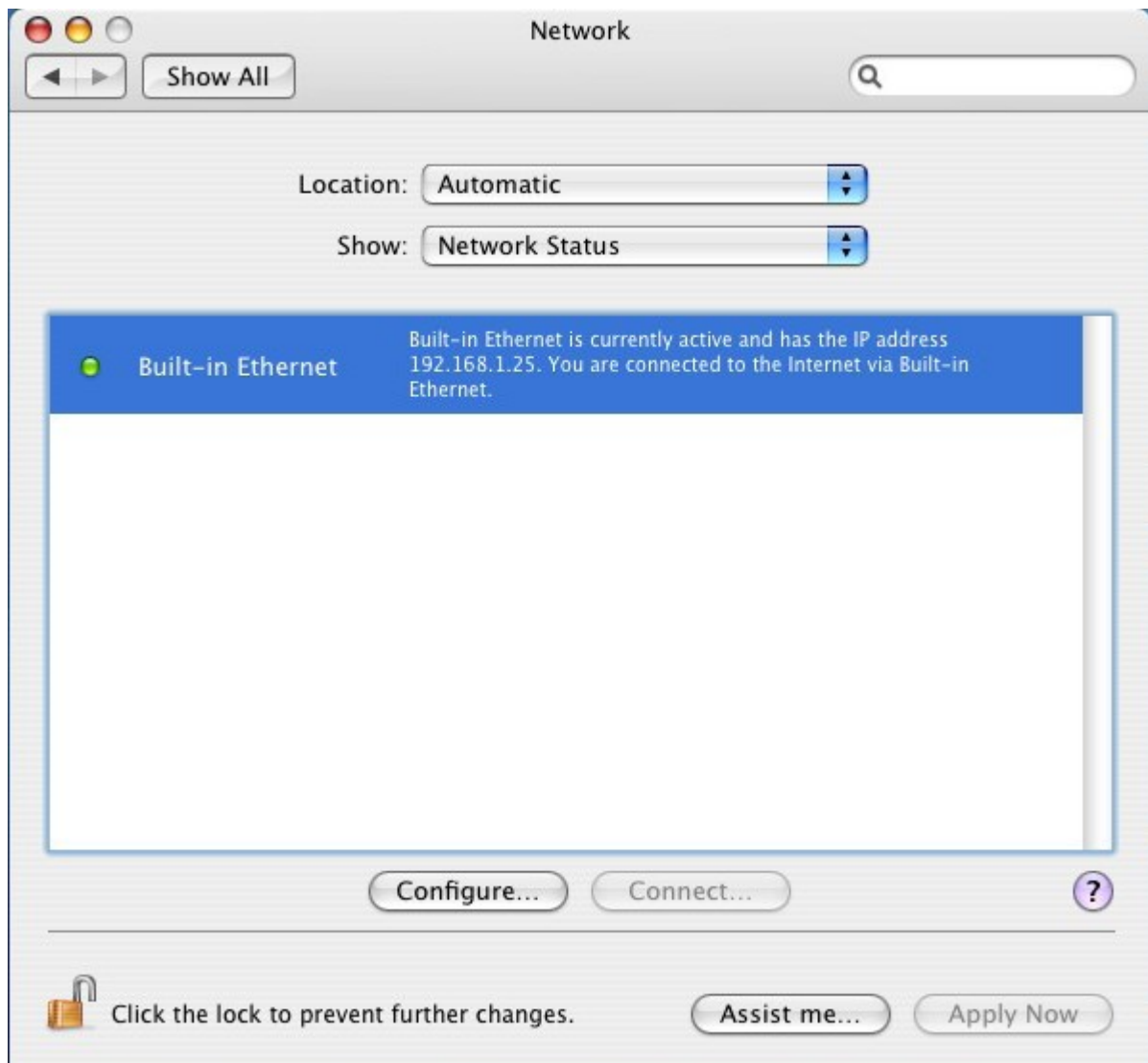


Fig 4.0 Network Preference – Before installing 3G card driver.

After installation of 3G card drivers, network properties will reflect new ports added as shown below:



Fig 5.0 Network Preference – New Ports Detected.

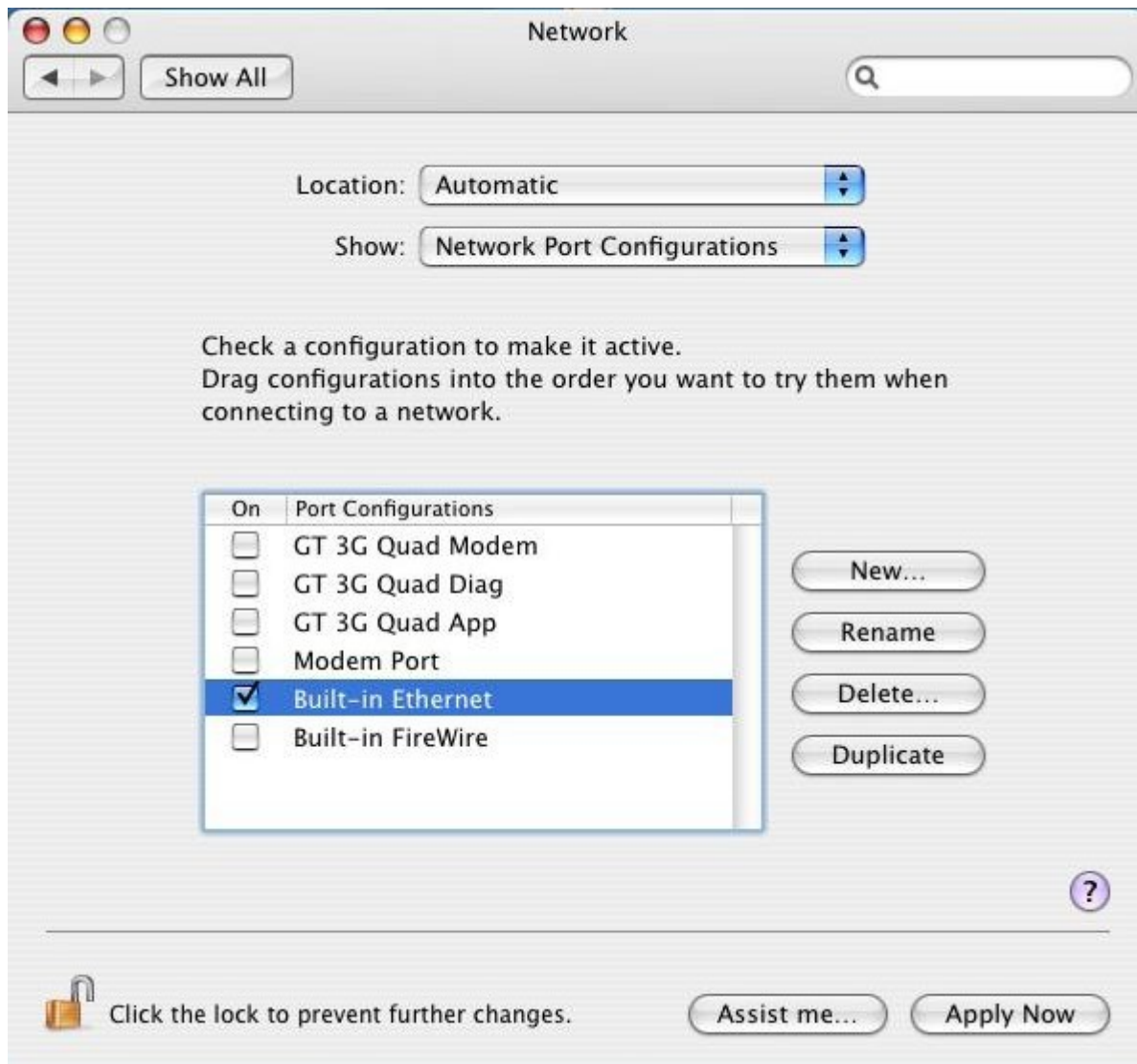


Fig 5.1 Network Preference – After installing 3G card driver.

Configuring the modem:

1. Deselect if any network port has been previously selected and then select the appropriate network port which is GT 3G Quad modem in our case.
2. Select the GT 3G Quad Modem option in the network port configuration settings.

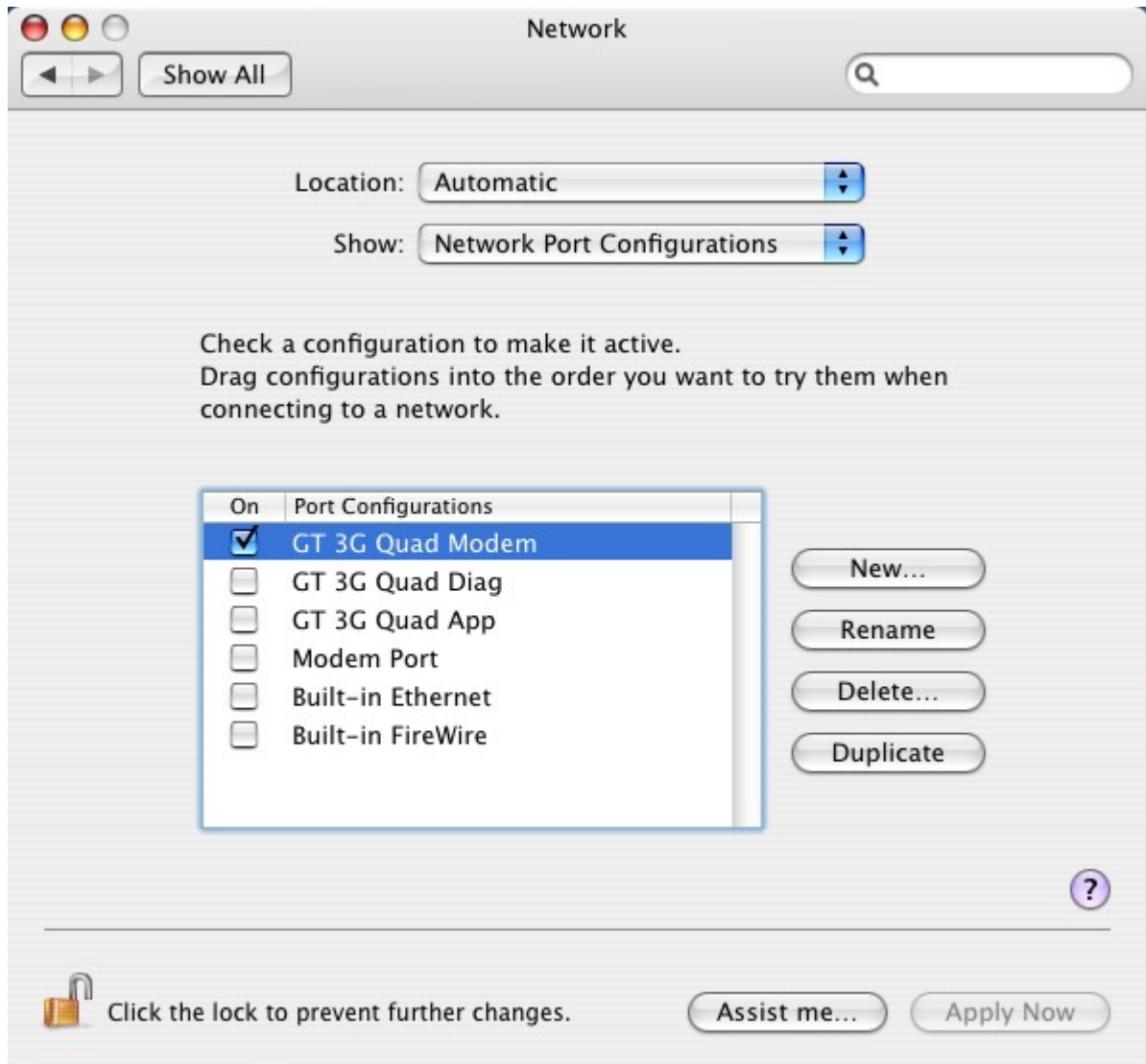


Fig 7.0 Network Preference – Port Configuration.

3. In the modem options select the appropriate modem type script file which in this example is a Vodafone.

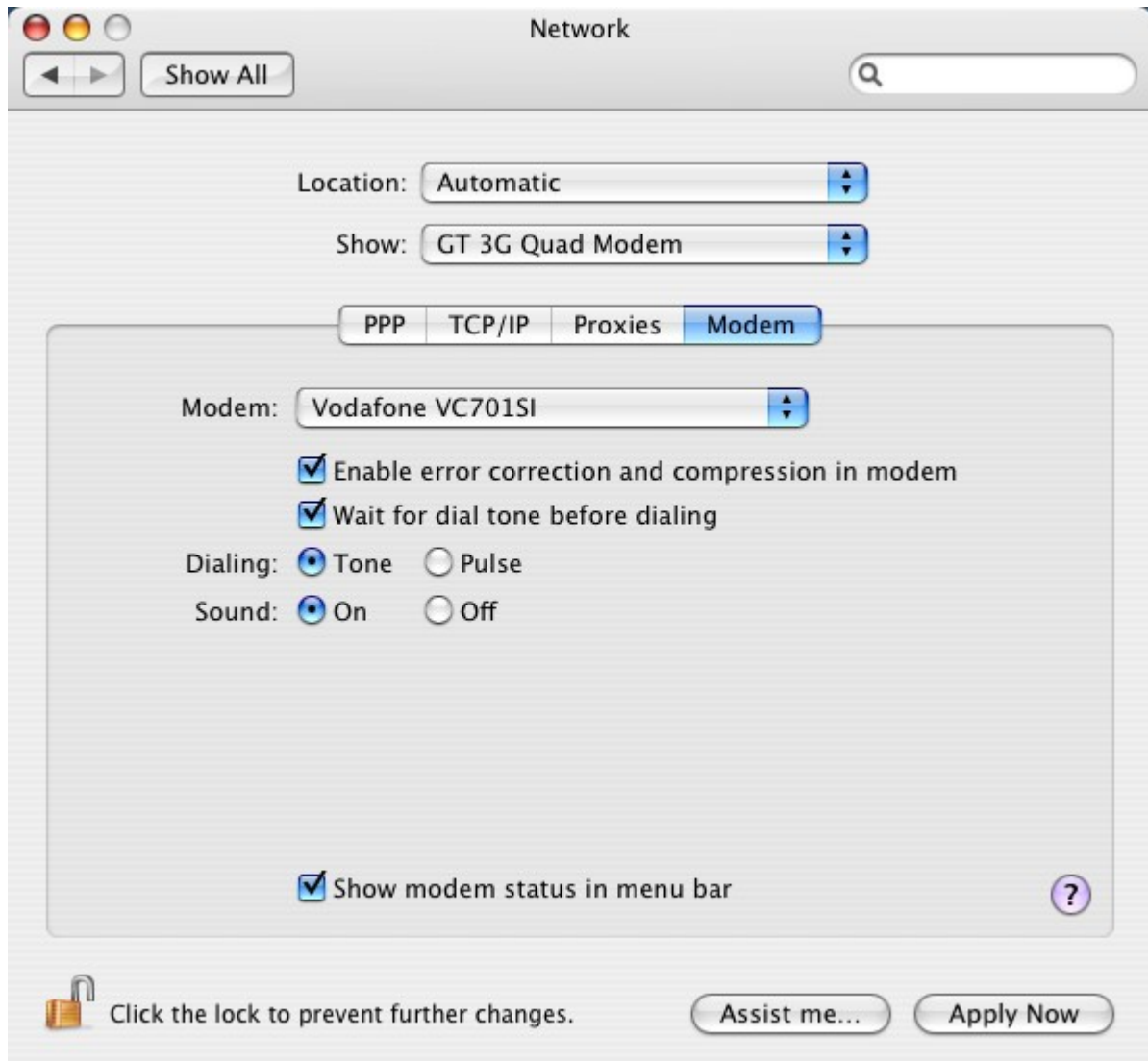


Fig 8.0 Network Preference – Modem Options.

4. Enter account details in the PPP options. These details can be obtained from your service provider. Some service providers do not require 'Account Name' and/or 'Password'. But the modem dialing scripts may require 'Account Name' and 'Password' and these cannot be left blank. So provide some dummy 'Account Name' and 'Password' even if the service provider does not need it.

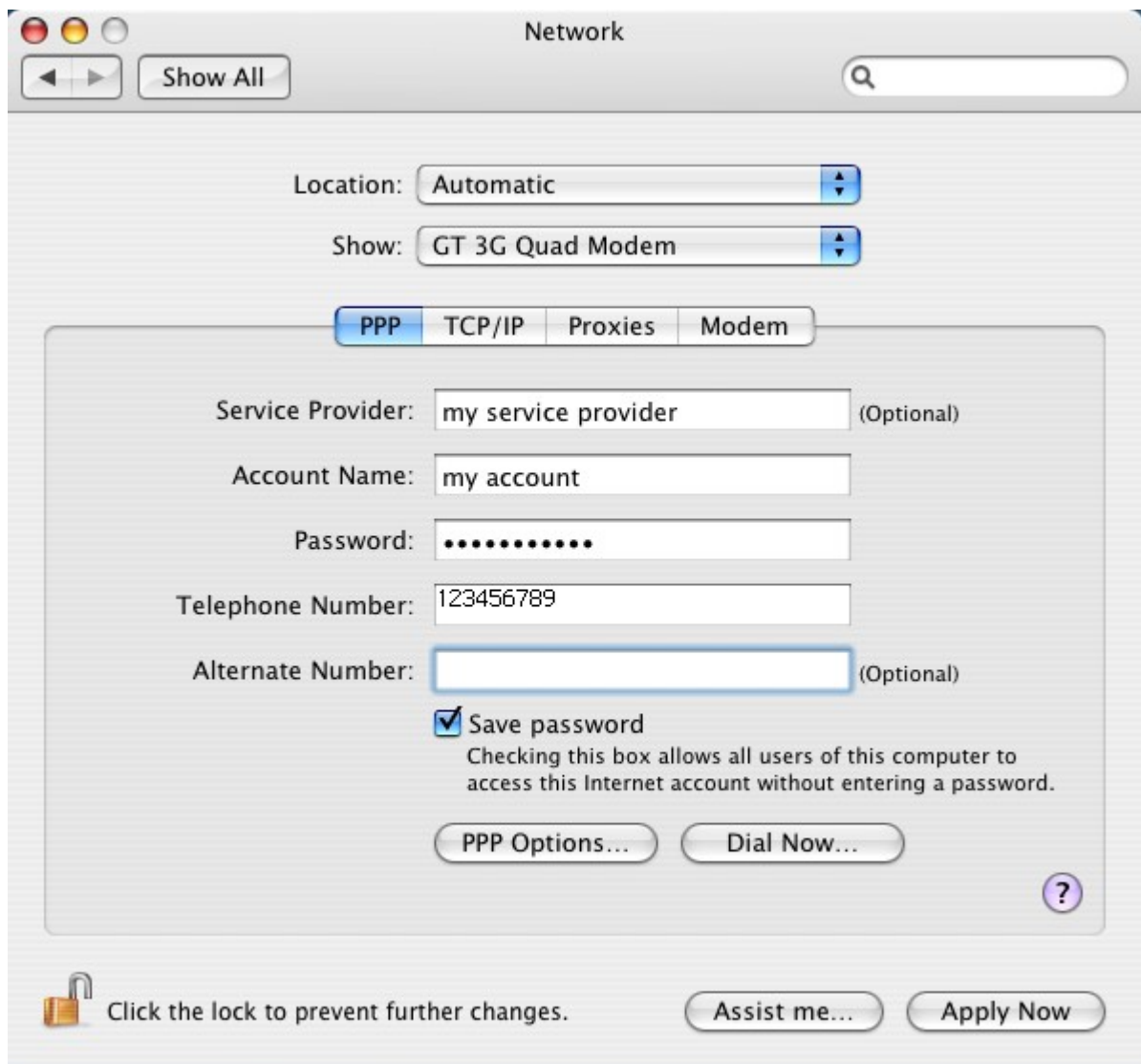


Fig 9.0 Network Preference – PPP Options.

5. Click on 'Apply Now' button.

Connecting to the Internet:

1. To connect to internet click on 'Dial Now' button in the PPP options window. This will bring up the following screen.

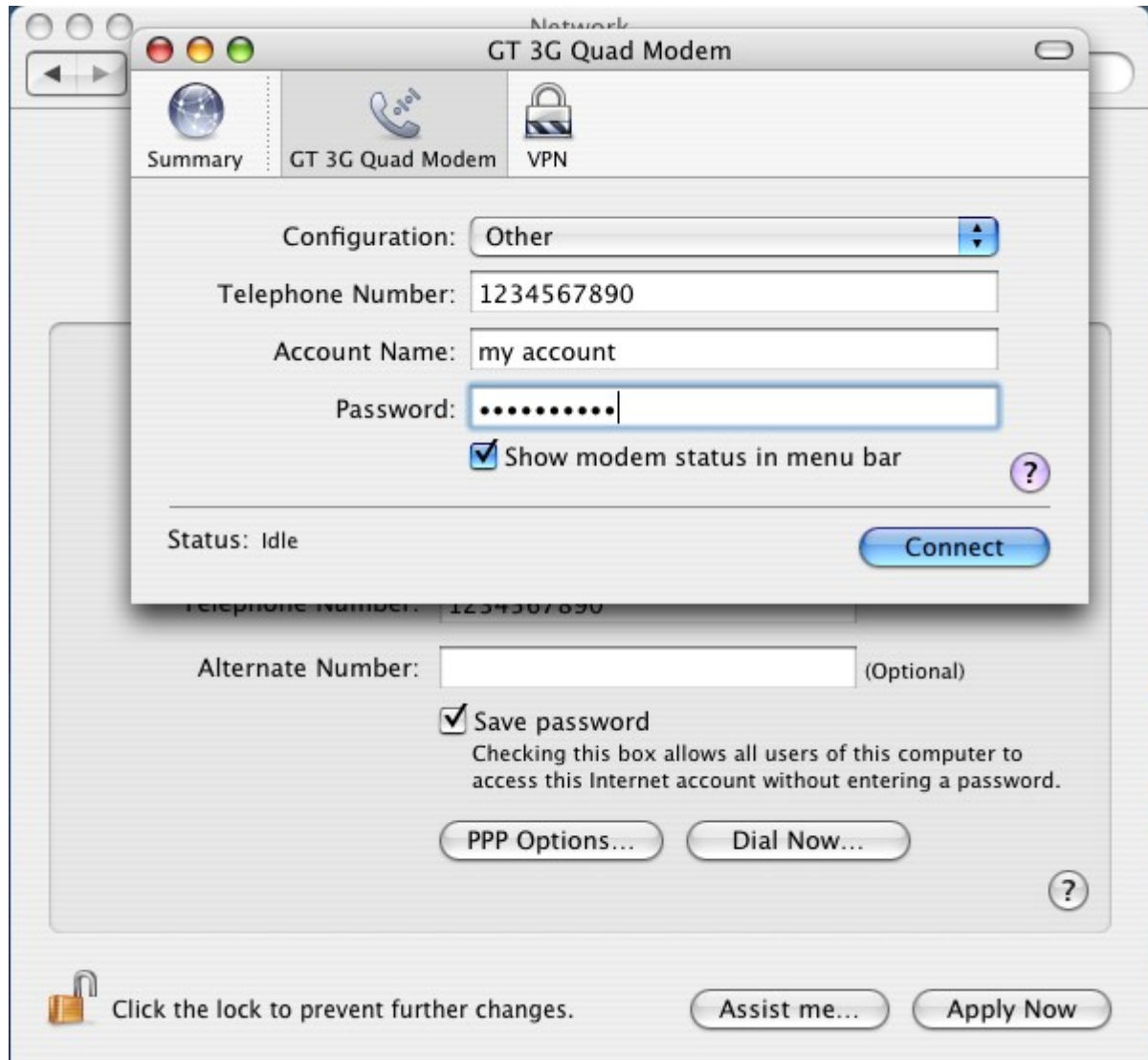


Fig 10.0 Network Preference – Internet Connect.

2. Click on 'Connect' to start dialing.



Fig 10.1 Network Preference – Internet Connect.